



Wakefield Parent Carer Forum

The Official Newsletter



Welcome! to the 10th edition of our newsletter...

We hope you have all enjoyed your summer, it seems to have gone by so quickly this year! We have spent some much needed time with our own families over the summer and are now back with a pretty full diary of events & activities for you all. We have lots to share with you, so why not make a cuppa, grab your diary and take a few minutes to catch up with what we have planned over the next few months for our forum members. Make sure to keep checking our website & Facebook Chat Group for the very latest information, what's on when, including details on how to book yourself a place.

We hope to see you at one of our events soon,
Alexis, Janine & Heather x

LETS TALK ABOUT SEND

The answers are in!

Did you attend our Let's Talk About SEND Event and post a question for a professional on our parking space board?

Look inside this issue for details on how to see all of the questions and answers we received.



Coffee & Chat

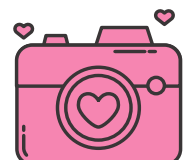
Join us most Wednesdays
10.30am



Unit 2, Airedale Business Centre,
Kershaw Avenue, Castleford
WF10 3ES

NEW HOME

As some of you are aware we have been working really hard to expand our existing unit so that we can deliver even more events & activities to our forum members. Take a look inside for a unit update including some sneak peek photos!





Wakefield Parent Carer Forum

Who we are

Wakefield Parent Carer Forum is an independent parent led forum who work with families of children with special educational needs and/or disability, aged 0-25 years old, living in the Wakefield area.

The forum is led by a group of local parents who are looking forward to listening to, and representing the views of parents, young people and children in the future.

These parents all have a wide experience of what it is like to be a parent of a child with an additional need or disability in the Wakefield area.

We want to work together with you to make a positive difference and improve the quality of life for all children and families in Wakefield.



info@wakefieldparentcarers.co.uk

What we can offer

Reduce isolation for families

Support services to enable families to cope better with the challenges resulting from interaction with various services

Peer support for all SEND families in the Wakefield Area

Support completing EHCP applications & other SEND paperwork

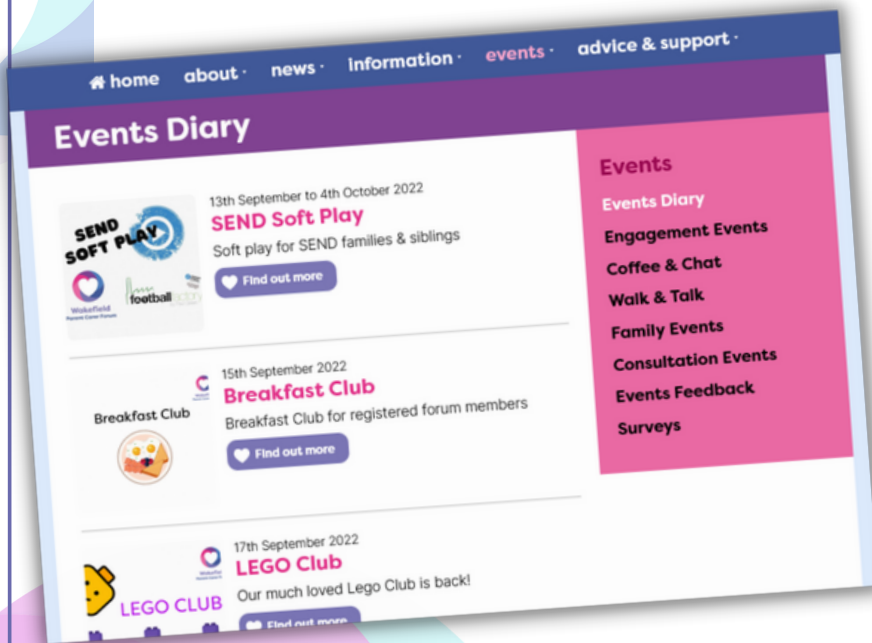
Provision of family activities, sibling support groups

Working with other services in the Wakefield area to make a positive impact for SEND families (LA, CCG, WESAIL, KIDS & local support groups)



UPCOMING EVENTS

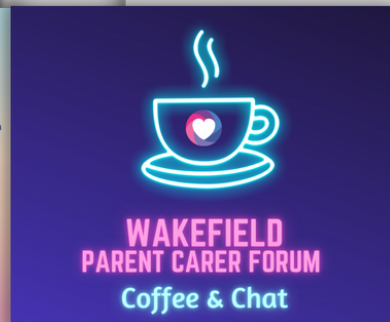
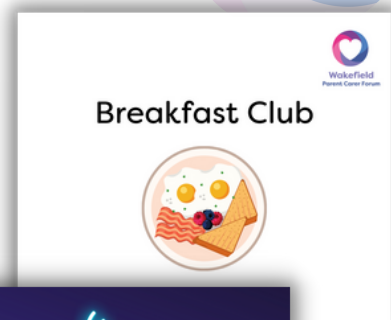
HAVE YOU CHECKED OUR WEBSITE EVENTS DIARY RECENTLY?



We have lots of events & activities available to book for you and your SEND family.

You will find some of the events listed below - but be sure to click the link for full details about what's on, including how to book your place.

Here are some of September & October's events, make sure you check back regularly for new events being added



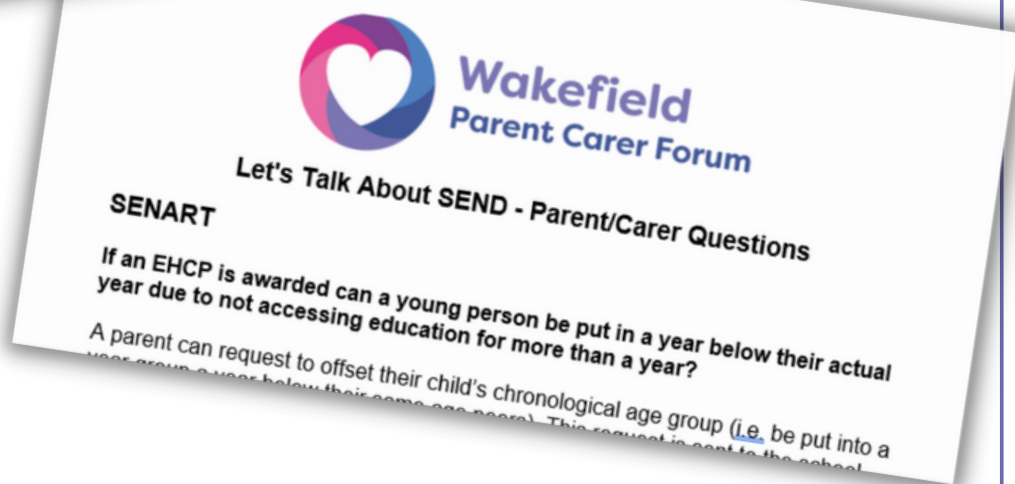
[Click here to see our Events Diary - https://www.wakefieldparentcarers.co.uk/events](https://www.wakefieldparentcarers.co.uk/events)



LET'S TALK ABOUT SEND

Following the success of our Let's Talk About SEND Event in June, we have decided to make this an annual event for parent/carers to meet with professionals and get accurate up to date information from the various teams and services within the Wakefield district.

If you were one of the parent/carers who joined us on the day, you will remember that we had a parking space where you could put questions to any of the professionals. We now have answers to all of the questions asked, which can be found on our website using the link below -



[Click to read Parent/carers Questions & Answers](#)

We would like to thank everyone who joined us for this event, and we are very grateful to all of the professionals who took time out of their busy schedule to support us.

If you missed this year's Let's Talk About SEND event, be sure to keep checking our website events diary for details being released for our 2023 event!

DATES FOR YOUR DIARY



ASD ENGAGEMENT EVENT



Wakefield ICB are hosting an ASD Engagement Event
on 5th October 2022 10am - 12.30pm
The Hut, Airedale, Castleford WF10 3ES

Come and join local NHS, council and voluntary organisations to look at the support and services provided for children and young people in Wakefield with ASD. There will also be an opportunity to share some of your families experiences of services within Wakefield.

For further information and to book a place please contact -
wycb-wak.cyp.commissioning@nhs.net
07812 469791

SEND CAREERS EVENT

Wakefield Council are
hosting a
SEND Careers Event on
5th October 2022
1pm - 7pm
Pontefract Racecourse,
WF8 4QD



**SEND Career's
'Next Steps'
Event**

Wednesday 5th October 2022
Premier Suite
Pontefract Racecourse
WF8 4QD

1pm - 7pm

- Onsite Parking ✓
- Drop in event ✓
- Meet Exhibitors ✓

Wakefield Employment Hub, in partnership with The Preparing for Adulthood (PfA) Team, are hosting a Special Educational Needs and Disabilities event for all Year 9 and above young people who have SEN/SEND needs.

EMPLOYMENT HUB West Yorkshire Combined Authority
wakefieldcouncil working for you

For more information
Wakefield Employment Hub
employmenthub@wakefield.gov.uk
01924 302057

The 5 Day Officer, Annette Patrick
anpatrick@wakefield.gov.uk
07467734653

DATES FOR YOUR DIARY



AET TRAINING FOR PARENT/CARERS

Evening Training Session
Day Time Training Session

As part of our continued commitment to working in co-production with Wakefield Council to improve education for all SEND children, we are excited to offer parent/carers an opportunity to join us for this amazing training session.

The sessions will be held on -

Tuesday 27th September 2022 6.30pm - 8.30pm

Thursday 13th October 2022 10.30am - 12.30pm

At our unit in Castleford (WF10 3ES)

An daytime session is available to book on a separate post pinned to the top of the group.

To take advantage of this session, your child must be attending a school within Wakefield.

Places are limited and will be allocated on a first come first served basis, so please book early - do not miss this opportunity!

More about the session -

This session will raise awareness of what training is being delivered to schools across the Wakefield district. It emphasises the need for all staff to treat children and young people as individuals, to look for barriers to learning and to use reasonable adjustments in the school environment so that children and young people can access learning and thrive. The session will be delivered by the WISENDSS Service Manager and Team Manager.

If your child is attending a Wakefield school and you would like to book a place on these sessions, please email events@wakefieldparentcarers.co.uk



**Autism
Education
Trust**





DID YOU KNOW?



Hello and thank you for the opportunity to tell you all about Wakefield Libraries.

We have 12 libraries across the district with dedicated children's spaces and offering a wide range of activities and events, from under 5's storytimes (with Makaton rhyme signing) to Code and Lego clubs. Many of our libraries also have a 'Magic Table' - to support mental health and wellbeing for children & adults through interactive digital games.

Wakefield Libraries are breast feeding and Autism friendly and some of our libraries offer relaxed quiet hours. All our libraries hold a wide range of information and specialist book collections to support children's mental and physical health.

Wakefield Libraries are 'Fine free and No ID' places, with easy sign up to become a library member and you are never too young to join the library. We have a range of modern, attractive and diverse books and audio books for children, young people and adults.

So why not come along to a library near you, where the staff will give you a warm welcome.

We hope to see you soon!



You can find out more about what's available in your local library by visiting the following web page -

<https://www.wakefield.gov.uk/libraries-and-local-history/your-local-library>

NEW HOME UPDATE



OUR UNIT HAS GROWN!

Due to increasing demand for our services we have outgrown our current unit, so have been working hard to extend our space.

We now have 3 times the space that we had previously, and have successfully hosted our first full face to face events last week.

Take a look at the photo's below for a sneak peek at what we have created so far...



Thank you again to our neighbours
Shades Decorator's for their help
transforming our units.

GIPSIL SERVICE

WELLBEING OUTREACH SERVICE

Are you aged 16-25?
Would you like support to improve your
mental health?



What is the service?

A free, city wide and confidential service
supporting young people to have their voice heard and valued,
and to make choices that are right for them.

Quotes from our young people:



"I feel calmer at home.
I'm no longer so angry
with my family"



"I'm trying to focus
less on my difficult
past experiences and
look to the future."

"I don't feel worthless
anymore. I've learnt to
slow down and I am
less harsh on my
body."

For more information including who the service is for and
how to refer, use the link below to take a look at the GIPSIL
Information Leaflet on our website -

<https://www.wakefieldparentcarers.co.uk/gipsil-service>

Or visit their website - <https://gipsil.org.uk/>



PASSENGER ASSISTANT VACANCIES

DO YOU KNOW SOMEONE WHO MAY BE INTERESTED IN THIS ROLE?



WE ARE HIRING

PASSENGER ASSISTANTS
Help support children and young people with SEND get to school or college.

Are you looking for a role that is genuinely rewarding and allows you the chance to make a real difference to peoples' lives? We are currently recruiting permanent and relief Passenger Assistants for routes across the district and beyond (e.g. Barnsley, Halifax and Doncaster).

PAY IS £9.59 PER HOUR
GRADE 2.

You will travel on a range of different vehicles and will be picked up and dropped off by the Operator at your home address.

JOB REFERENCE 231198

[Look on Wakefield.gov.uk/jobs](https://www.wakefield.gov.uk/jobs)



EBSA RESEARCH WITHIN WAKEFIELD

EMOTIONALLY BASED SCHOOL AVOIDANCE RESEARCH OPPORTUNITY

Dear Parent / Carer,

My name is Mel Whitby, and I am a Research Fellow at Leeds Beckett University. I am currently working with Wakefield Council to complete a piece of research exploring support for young people who may be experiencing difficulties attending school, particularly young people who may be experiencing emotionally based school non-attendance.

Staff in Children's Services, at the Council, would like to explore what support young people and families would find helpful in supporting a return to school / re engagement in education. To find this out, we would like to speak to young people and their parents / carers and ask what they would find helpful.

In collaboration with Leeds Beckett University, Wakefield Council are completing a research project exploring what support families and young people need when they are experiencing EBSA. We are looking to hold interviews with at least six parents/carers and six young people to ask them what help and interventions they think they need to support a return to school.

"How should young people experiencing Emotionally Based School Avoidance (EBSA), and their families, be supported?"

Is your child:

1. Aged between 10-16 years old.
2. Not currently attending school or did not attend school for at least 20 days in the past year.
3. Showing anxiety, worry, or distress in relation to school.
4. Registered to a school in the Castleford or Airedale area.

If so, then I would like to invite you and your child to speak with me about your current experiences. If you have further questions you would like to ask, then please do email or call me using the contact details below.

Warm regards, Mel Whitby Research Fellow / Embedded Researcher

Telephone Mel : 07825 121112 or
Email - mwhitby@wakefield.gov.uk



NICE TO KNOW



TRANSITION SURVEY

We will shortly be releasing our next survey to look at transitions between settings, and will be asking parent/carers to share their experiences both positive and constructive. Keep a look out on our website and Facebook Chat Group for further details.

HALLOWEEN PARTY

We will be hosting a Halloween Party for our registered forum members and their children on Monday 31st October 2022 4.30pm - 6.30pm

at The Hut, Airedale, Castleford WF10 3ES

If you would like to book a place please email events@wakefieldparentcarers.co.uk and mark your email Halloween Party. Fancy dress is optional.



COFFEE & CHAT SESSIONS

We have our regular Coffee & Chat sessions starting again from

**Wednesday 28th September,
10.30am - 12.30pm**

when we will be welcoming guests from the Wakefield Council SENART Team.

Do you have questions about EHCP's, what the process involves, do you need to apply for an EHCP etc. If so then this relaxed session is the place to come along and ask.



Other Coffee & Chat sessions with guests include -

Wednesday 19th October - SENART

Wednesday 9th November - Preparing For Adulthood

Wednesday 30th November - Social Care Practitioner

10.30am - 12.30pm



SCHOOL SEND SURVEY

HAVE YOU HAD YOUR SAY?

Our annual School SEND Survey will come to a close at the end of September 2022, so this is your last chance to have your say about your child's school. The survey is easy to complete on our website, and is a great way for you to share your experiences, both positive and constructive, to help us improve education for SEND children within Wakefield. Please use the link below to complete the survey -



<https://www.wakefieldparentcarers.co.uk/wakefield-parent-carer-forum-school-send-survey-2022>

SCHOOL COFFEE MORNING

WOULD YOU LIKE US TO VISIT YOUR SCHOOL?

Does your school host coffee morning's for SEND parent/carers?

If you would like us to attend some coffee morning's at your child's school, then please let your SENCO know or get in touch with us using the email address below.

info@wakefieldparentcarers.co.uk

We are keen to work with local schools to help support communication with parent/carers, by building positive working relationships.





USEFUL CONTACTS



Wakefield
Parent Carer Forum

WAKEFIELD PARENT CARER FORUM

Unit 2, Airedale Business Centre,
Kershaw Avenue, Castleford WF10 3ES
info@wakefieldparentcarers.co.uk
www.wakefieldparentcarers.co.uk
TEXT - 07462 103057

CAMHS SPA 01977 735865
CAMHS AIREDALE 01977 735900

CONTINENCE TEAM
01924 541009
01977 747066

SENART

01924 302465
senart@wakefield.gov.uk
SENART, Block C, Normanton Town Hall,
High Street, Normanton WF6 2DZ

PONTEFRACT OCCUPATIONAL THERAPY

Pontefract - 01977 747180
Pinderfields - 01924 541411

WESAIL - FAMILY ACTION

01924 965588
wesail@family-action.org.uk

TRANSPORT TEAM

hst@wakefield.gov.uk
01924 305675 or 01924 305643

LOCAL OFFER

wakefield.mylocaloffer.org

EDUCATION, INCLUSION & ASSESSMENT SERVICE

eps@wakefield.gov.uk
01924 307403

INFORMATION NETWORK

wakefield.mylocaloffer.org/information-network

SOCIAL CARE DIRECT

01924 303458

CARERS WAKEFIELD

01924 305544

SCHOOL NURSING TEAM

01924 310130

PORTAGE

01924 307403
eps@wakefield.gov.uk

IPSEA

01799 582030
office@ipsea.net

WISENDSS

WISENDSS@wakefield.gov.uk

PINDERFIELDS & PONTEFRACT CHILDRENS CENTRE

01924 541009 and 01924 541982

